

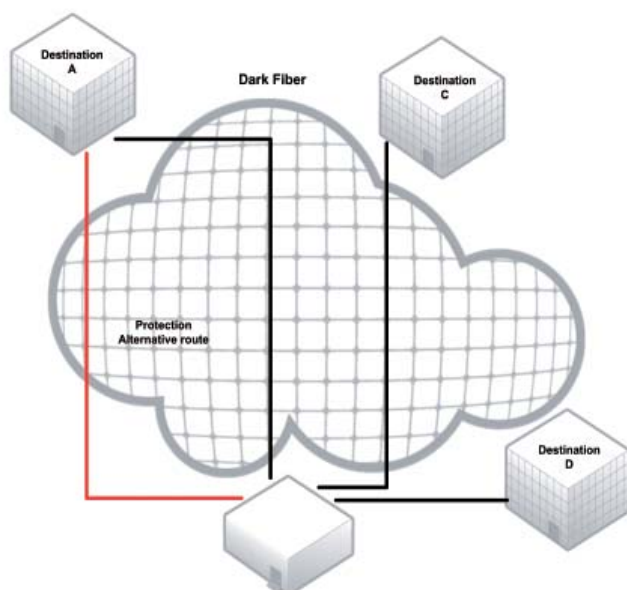
# Dark Fibre

- Rent of dark fibre
- Design and manage own private fibre network
- Physical separation from other networks
- GlobalConnect manages surveillance and maintenance
- Transparent fibre technology
- Unlimited bandwidth
- A future-proof investment in bandwidth delivered on fibre

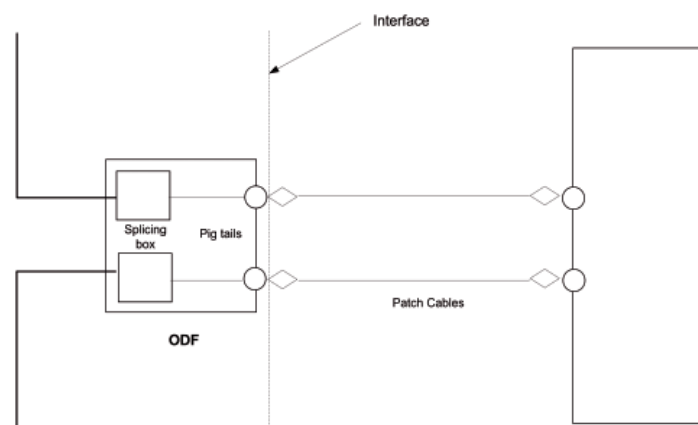
GlobalConnect offers as one of the few tele companies in Denmark rent of dark fibre.

Dark fibre can be rented to connect various locations with the ultimate networking medium available. The optical equipment needed for utilization of the fibres are not part of Dark Fibre, and need to be installed as well. The fibre pairs may be utilized according to whatever limitations of capacity the equipment may have.

All fibres are of the type Single Mode and meet the ITU-T recommendation G.652.



When the fibres are ready for use, a certificate is issued, confirming that the fibres meet the acceptance test, together with a copy of the relevant documentation. GlobalConnect has the operational responsibility up to, and including the connector on the fibre patch panel. Patch cables, racks and equipment is the tenant's responsibility. The Interface is shown below.

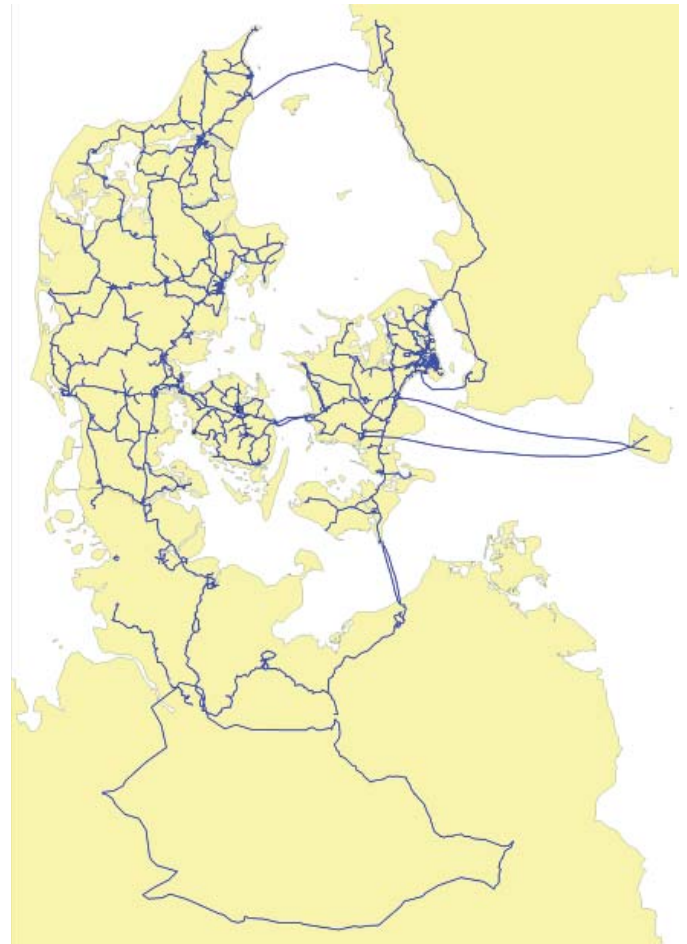


Interface

## Network Monitoring

GlobalConnect's major fibre stretches are constantly being monitored using a fibre test system, which is continuously making so-called OTDR monitoring on a dedicated fibre (OTDR = Optical Time Domain Reflectometer). Hereby the time of fault finding in GlobalConnect's network is being reduced, as by a cable breach it is possible to point out the location of fault within one meter.

Moreover, GlobalConnect is executing preventive maintenance by route check, monitoring of places where other entrepreneurs are digging, attenuation testing, and correct responses of all relevant duct enquiries. All of this enables a Service Level Agreement rendering 99.80 per cent availability.



*Technical data*

Standards	Conforming to ITU-T G.652 and G.655
Wire types	6-264 fibre optical wires
Casing	Black MDPE-cloak and orange PA-sleeve
Max damping	0.4 dB at 1310 nm & 0.25 dB at 1550nm
Repair time, goal	8 hours
Repair time, max	24 hours
Surveillance	24/7/365
Availability	99.80%
Connector types	E2000/APC, SC/PC, FC/PC